



## NEF GLOBAL PROPERTY - C

### Investment Policy

The objective of this Fund is to provide a total return through a global diversified portfolio. The Fund's investment decisions are made on a discretionary basis. The Fund mainly invests in stocks and bonds issued by real estate listed companies which operate in industrialised countries and closed-ended real-estate funds. The closed-ended real-estate funds are admitted or dealt in on a regulated market or an equivalent. The Fund's investments may be denominated in Euro or other currencies. At least 80% of investments in other currencies will be hedged in Euro. Financial techniques and instruments for hedging and/or non hedging purposes may be used. Income generated by the Fund is reinvested and included in the value of units. Investors can buy or sell units of the Fund every day which is a bank business day in Luxembourg. Recommendation: this Fund may not be appropriate for investors who plan to withdraw their money within 5 to 6 years.

### Overview

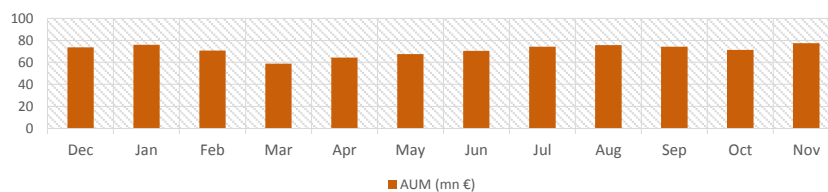
Date	30 Nov 2020
Portfolio launch date	16 Apr 2007
Unit class launch date	14 May 2019
Unit Type	Cap
Currency	EUR
ISIN Code	LU1555163051
Ticker Bloomberg	NEFIMMC
NAV Frequency	Daily
Management Fees	1.20%
Ongoing Charges	1.56%

Management Company	NEAM S.A.
Investment Manager	Schroder IM
Central Administration	CACEIS
Depository Bank	CACEIS

### SRRI Indicator



### Total Net Asset (Sub-fund) - 1 Year or since inception



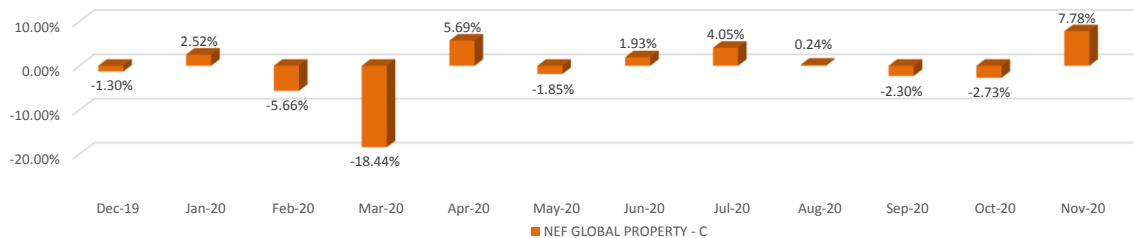
### Performance Indicators

Performance %	1M	3M	6M	YTD	1Y	3Y
NEF GLOBAL PROPERTY - C	7.78%	2.42%	8.89%	-7.55%	-8.75%	

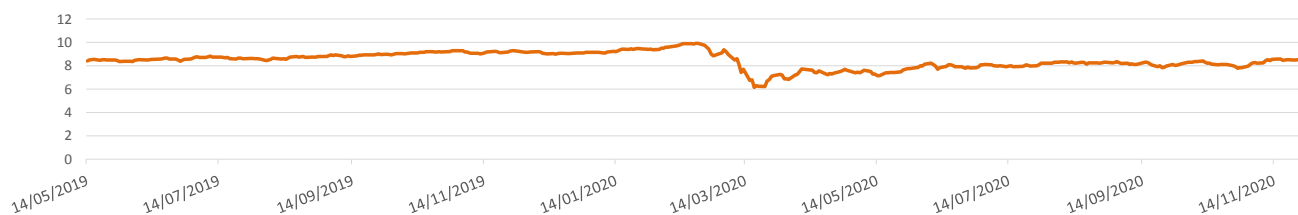
### Past Performance - 3 Years



### Past Performance - 12 Months

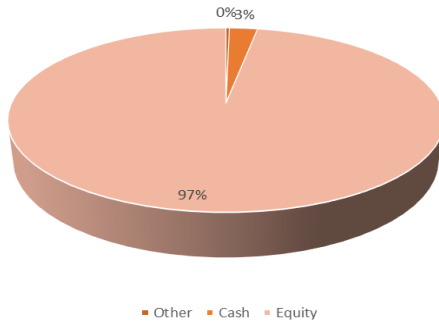


### Daily NAV Price - 5 Year or since inception

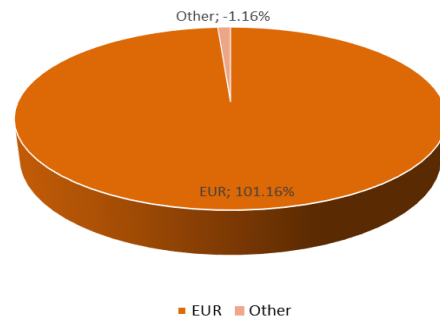




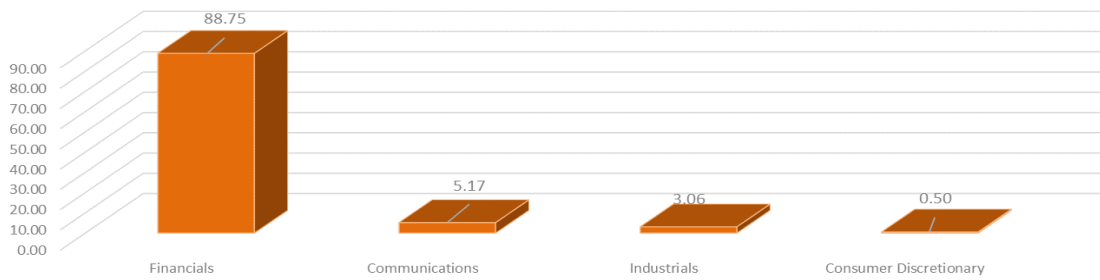
### Asset class breakdown %



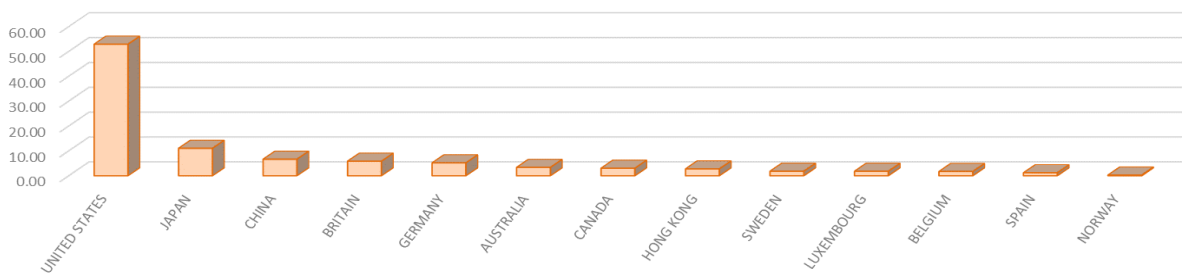
### Currency breakdown % - After hedging



### Sector breakdown %



### Country breakdown %



### Top Ten Holding %

Prologis Inc	4.09
Healthpeak Properties Inc	3.33
Sun Communities Inc	3.24
Camden Property Trust	3.23
Alexandria Real Estate Equitie	3.18
Terreno Realty Corp	3.17
Deutsche Wohnen SE	3.00
Rexford Industrial Realty Inc	2.95
Cousins Properties Inc	2.80
21Vianet Group Inc	2.63
<b>Total</b>	<b>31.63</b>