

NEF EE.ME.A. EQUITY - R

Investment Policy

This equity Fund seeks to invest primarily in stocks listed on Eastern European, Middle East & African stock markets (EE.ME.A.). The Fund may also invest on an ancillary basis, in stocks listed on other stock markets. The Fund's investment decisions are made on a discretionary basis. Financial techniques and instruments for hedging and/or non hedging purposes may be used. Income generated by the Fund is reinvested and included in the value of units. Investors can buy or sell units of the Fund every day which is a bank business day in Luxembourg. Recommendation: this Fund may not be appropriate for investors who plan to withdraw their money within 7 years.

Overview

Date	30 Nov 2020
Portfolio launch date	04 Mar 2002
Unit class launch date	22 Apr 2002
Unit Type	Cap
Currency	EUR
ISIN Code	LU0140697805
Ticker Bloomberg	NOREAER
NAV Frequency	Daily
Management Fees	1.85%
Ongoing Charges	2.39%

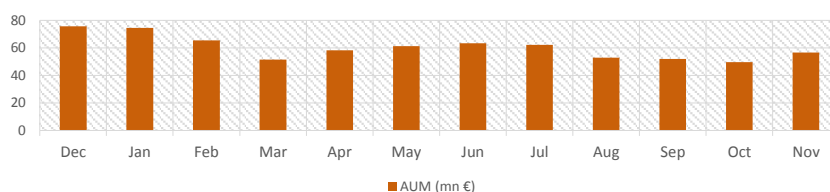
Management Company	NEAM S.A.
Investment Manager	Union Investment
Central Administration	CACEIS
Depository Bank	CACEIS

SRRI Indicator



Fund Volatility - 1Y	16.35
Sharpe Ratio - 1Y	23.47

Total Net Asset (Sub-fund) - 1 Year or since inception

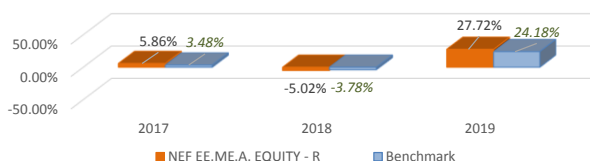


Performance Indicators

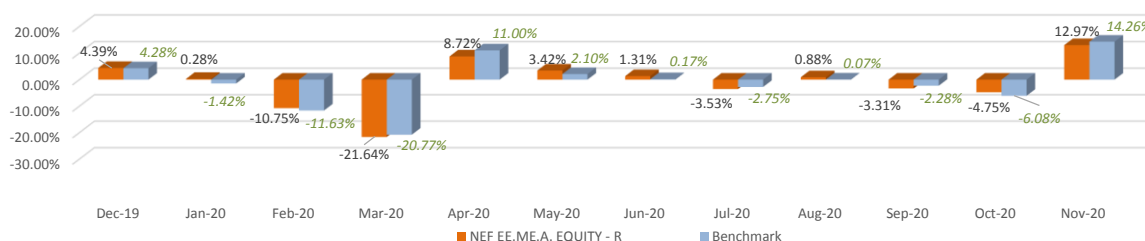
Performance %	1M	3M	6M	YTD	1Y	3Y
NEF EE.ME.A. EQUITY - R	12.97%	4.04%	2.58%	-19.94%	-16.42%	-0.40%
EEMEA BMK COMP	14.26%	4.87%	2.24%	-18.53%	-15.05%	1.53%

55% MSCI EM EAST, 10% MSCI EUROPE, 10% MSCI TURKEY, 10% MSCI EGYPT, 10% MSCI SAUDI ARABIA, 10% MSCI S. AFRICA, 5% MSCI NIGERIA

Past Performance - 3 Years



Past Performance - 12 Months

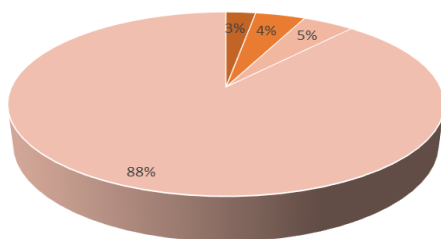


Daily NAV Price - 5 Year or since inception



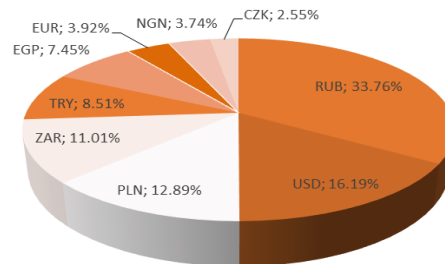


Asset class breakdown %



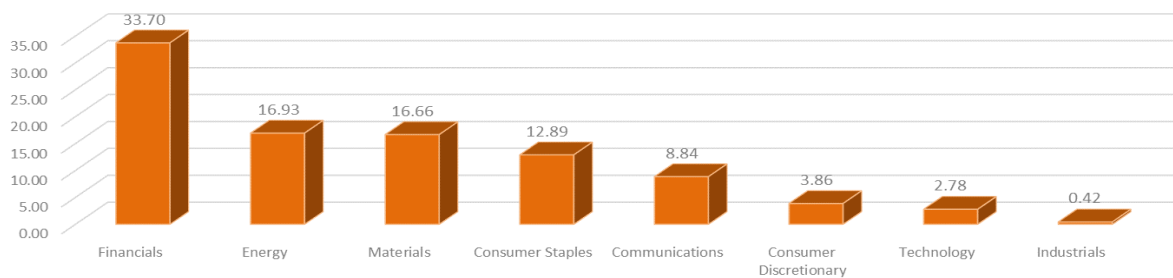
Other Cash Bond Equity

Currency breakdown % - After hedging

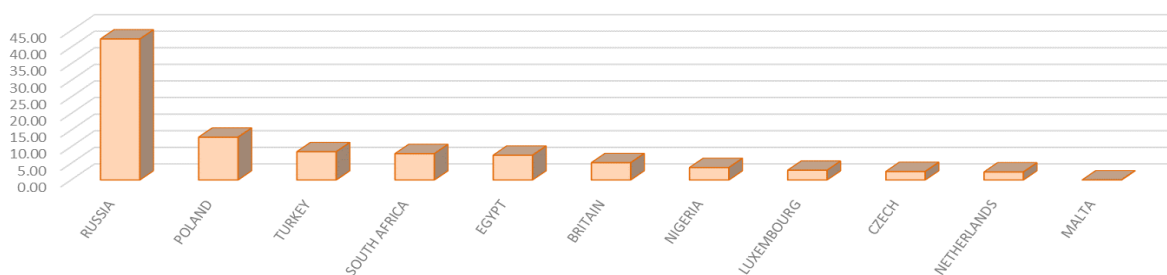


RUB USD PLN ZAR TRY EGP EUR NGN CZK

Sector breakdown %



Country breakdown %



Top Ten Holding %

HSBC 0 01/19/21	3.62
Naspers Ltd	3.61
Dino Polska SA	3.49
Polyus PJSC	3.10
CD Projekt SA	2.78
SAGB 8 7/8 02/28/35	2.38
RFLB 7.65 04/10/30	2.10
BHRAIN 7 1/2 09/20/47	2.00
PANAMA 9 3/8 04/01/29	1.98
PERU 8 3/4 11/21/33	1.95
Total	27.01